



## ACOUSTIC ENERGY AEGIS NEO 1 £199

**A**coustic Energy have a knack of turning out fine loudspeakers and only making updates as and when they feel necessary. The Evo series is one such update and takes the award-winning Aegis Evo as its starting point. As might be expected from the name, Acoustic Energy make use of neodymium magnets on both the tweeter and bass driver. As neodymium develops a much stronger and more linear magnetic field than the barium or strontium ferrites more commonly used, less material is needed and the motor unit can be made more compact and efficient.

In the Neo 1s, these motor units are used on a 1in (25mm) ring radiator tweeter and a 5.25in (130mm) bass/mid driver with a pressed alloy cone and, unusually these days, a foam surround. Measuring 357x182x237mm (HxWxD), the Neo 1s are available in Black Ash, Light Oak and Walnut and features a single pair of connection terminals.

### SOUND QUALITY

The Neo 1s offer an intriguingly similar sound balance to the Mordaunt Shorts, unusual given the big differences in drive unit material that each uses! As a result, the Aegis Neo 1s have a similar dynamic enthusiasm and clarity, but they add a little extra sweetness and open neutrality across the upper

midband. This time, vocalists were clean and clear, but displayed real transparency without undue dryness. Suddenly Norah Jones sounded emotional, standing out markedly from her backing instruments, with her voice more natural and her vocal inflections flowing better.

The Neo 1s also excelled in soundstage terms, offering impressive levels of projection out into the room. Instruments were expertly defined and laid out with commendable precision, such that it was easy to follow a particular item, but simultaneously melding

everything together into a very impressive whole.

At the low end, the Acoustic Energys offered excellent levels of heft for their cabinet size, adding impressive weight to performances. Although their very bottom end was a little softer than the Avants (although by no means loose or boomy) they really came into their own in terms of detail. Now, acoustic basses had proper body and depth to them, and each note could be heard to emanate from an instrument, rather than just being a rounded slab of bass.

### MEASURED PERFORMANCE

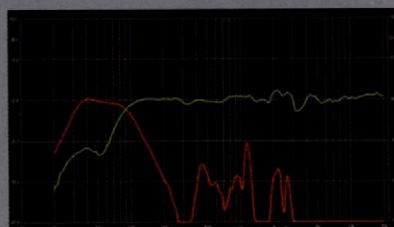
The Acoustic Energy Neo 1s offer the sort of flat response that many loudspeaker designers dream about! You can lay a ruler along their trace from 100Hz to 20kHz and they hardly deviate from this line. The only small glitch is around the 3.5kHz crossover frequency but this is very small. As a result the Neo 1s should offer an even performance across the frequency range.

At the bottom end, the AEs roll off at around 90Hz and have a rear-mounted port that reinforces bass down to its tuning frequency of around 55Hz, which should bode well for a solid low end.

Electrically, the Neo 1s are less well damped than some at the bass end, but have an otherwise even electrical measurement, with an average impedance of 7.3 Ohms, dipping to a minimum of around 5 Ohms. As a result, they are not a difficult load to drive, especially when

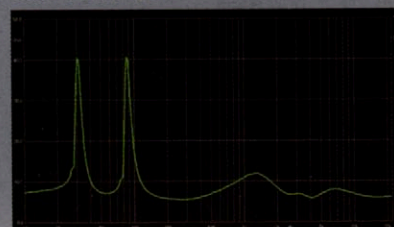
combined with a measured sensitivity of 86dB. AS

#### FREQUENCY RESPONSE



Green - driver output  
Red - port output

#### IMPEDANCE



### VERDICT

A beautifully balanced loudspeaker, the Acoustic Energy Aegis Neo 1s are a most impressive design, offering clarity, detail and emotion.

**ACOUSTIC ENERGY AEGIS NEO 1** £199  
Acoustic Energy  
☎ +44(0)1285 654432  
[www.acoustic-energy.co.uk](http://www.acoustic-energy.co.uk)

**FOR**  
- soundstaging  
- natural presentation  
- bass detail  
- overall clarity

**AGAINST**  
- slight low end looseness